



MOSAIC

Quick start guide

Copyright © 2020 DUALZ SOLUTIONS BV

ALL RIGHTS RESERVED

INFORMATION IN THIS DOCUMENT IS PROTECTED AND CAN NOT BE REPRODUCED IN ANY FORM WITHOUT THE PERMISSION OF DUALZ SOLUTIONS BV.



CONTENTS

Introduction	3
Installation & Configuration.....	3
Recommended Operation System	3
Software installation.....	3
Set working folder	3
Demo setup	3
Desktop shortcuts.....	4
Start demo.....	4
MOSAIC web server	6
(Licensed) Key installation	7

Dualz Software BV
Witvrouwenbergweg 12
5711 CN Someren
info@dualz.nl

INTRODUCTION

This document describes how to get the Dualz MOSAIC software and running quickly. In demo mode, both the editor and the mosaic player are installed on the same system, and interconnect via local host (127.0.0.1).

A simple configuration with 1 screen is created in trial mode. This manual describes the installation for version 2.7.4 and higher.

INSTALLATION & CONFIGURATION

RECOMMENDED OPERATION SYSTEM

The software is running in all windows versions:

Recommended Operating System is Win10 prof 64 bit.

SOFTWARE INSTALLATION

1. Unzip the downloaded package MOSAICdemo.zip
2. Run "Setup.exe"

Recommended to keep the default installation folders.

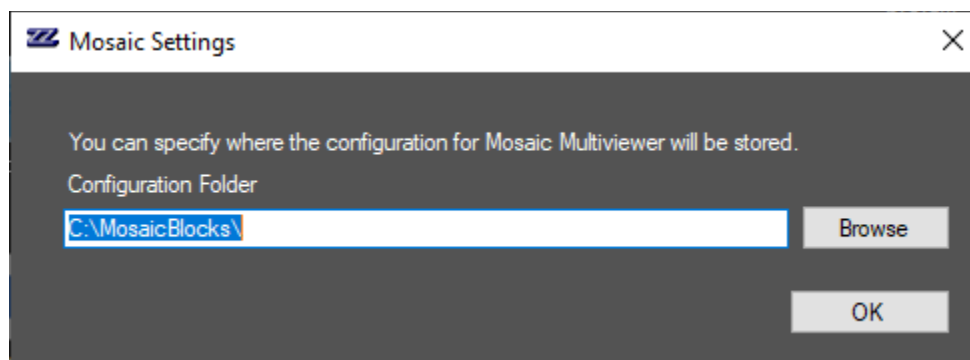
NOTE: The installation requires VC x64 redistributable.

If it is not already installed on your system, the installation setup will generate a warning.

Run "VC_redist.x64.exe" which is included in the installation package, an install the software again.

SET WORKING FOLDER

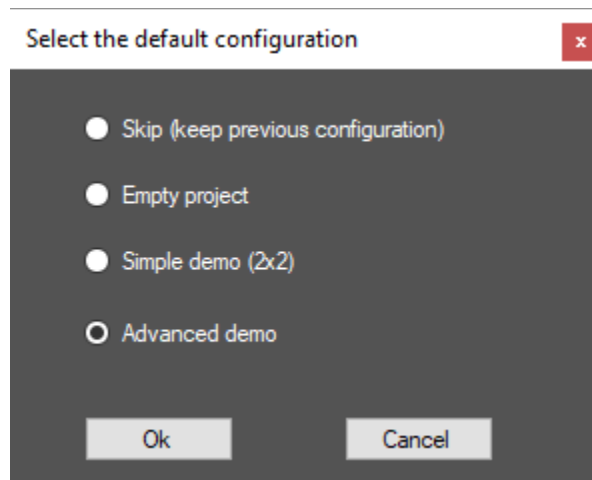
During installation, you are asked to set a working folder. Recommended to leave the default unchanged.



DEMO SETUP

During installation, you can chose to create a demo setup, or not. The following options are available:

1. Skip (keep previous configuration)
2. Empty projects
3. Simple demo (2x2)
4. Advanced demo



DESKTOP SHORTCUTS

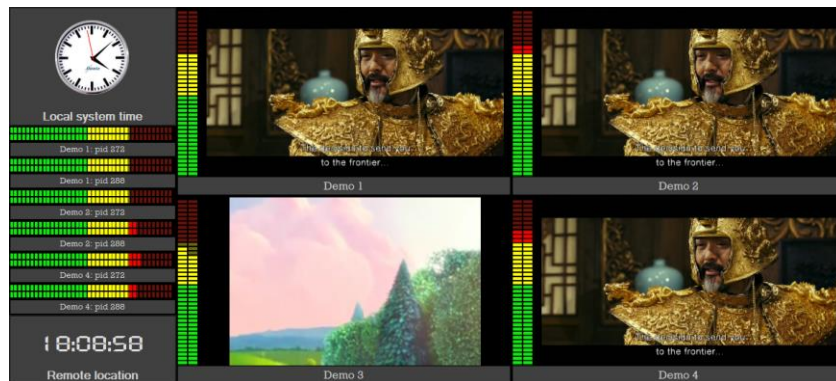
After installation, 3 new desktop shortcuts are created:

- Start mosaic screen1 : Starts the mosaic multiviewer screen
- Mosaic editor: Opens the editor (with the demo information if this was selected).
- Start sample file: Starts the sample stream (multicast over localhost, 127.0.0.1)

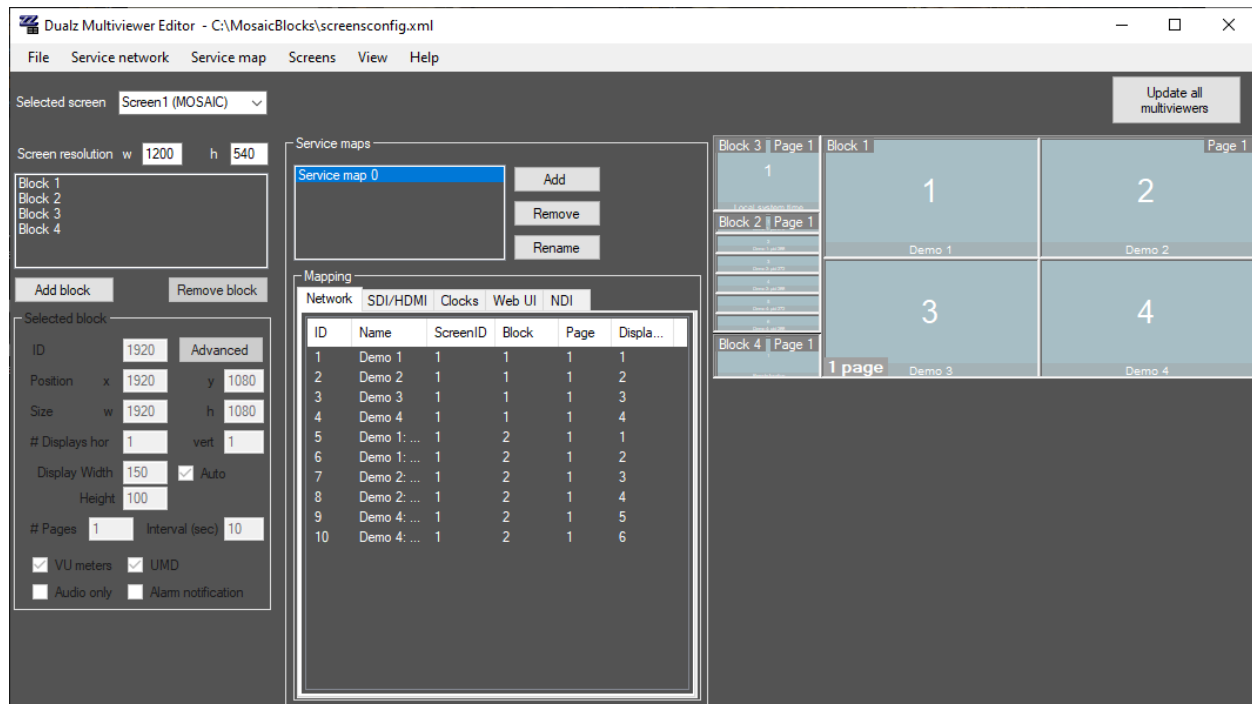
START DEMO

If you selected demo setup, the demo is automatically started, meaning:

- Start mosaic
- Start streamer
- Start editor



You can configure the demo setup, by editing the structure using the editor. Don't forget to select "Update all multiviewers" in order to push the configuration to the multiviewer screen.



You can quickly test one of your streams via MOSAIC editor:

- Open menu "Service network"
- Double click "Demo 3"
- In "Network stream", fill in your url, for example:
`rtsp://18.191.60.12:1935/vod/sample.mp4`
or
`udp://@235.5.5.5:5555`

- Select “Save” twice
- Select “Update all multiviewers” (be sure the screen application is running)

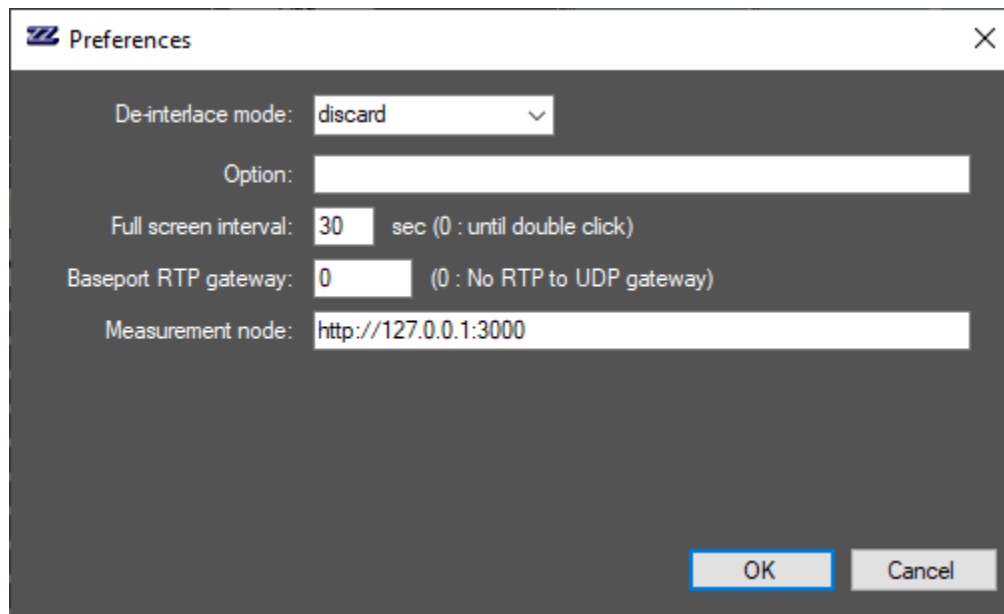
Now your stream should be visible. Refer to “Manual MOSAIC editor” for more detailed instructions.

MOSAIC WEB SERVER

The MOSAIC webservice can be started via Program menu Dualz Solutions – MOSAIC webservice.

By default the web server listens to port 3000. Locally, you can open a browser on <http://127.0.0.1:3000>

In the editor fill in this address of the web server (where the alarms shall be reported).



The web browser will show the statuses of your streams. You can access the web server remotely. Note that the port must be forwarded on your router, if accessed from outside your LAN. Also be aware of firewall issues.

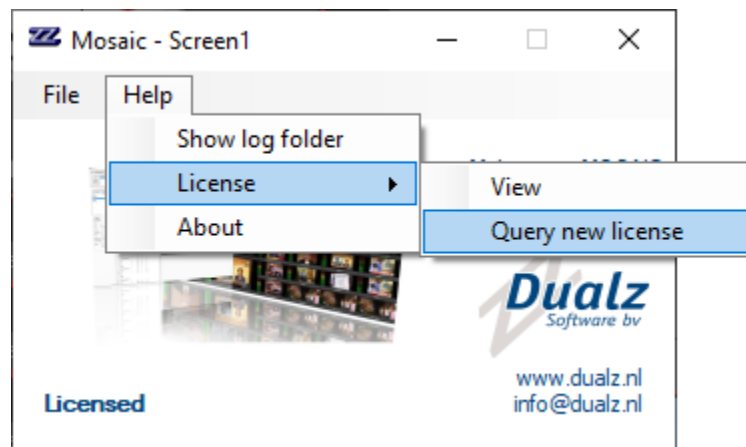
<p>1: Demo 1 (trial)</p> <p>Status: Okay (0) Time: 2021-03-24 2:12:08.218</p>	<p>2: Demo 2 (trial)</p> <p>Status: Video loss (401) Time: 2021-03-24 2:12:08.415</p>	<p>3: Demo 3 (trial)</p> <p>Status: Okay (0) Time: 2021-03-24 2:12:08.417</p>	<p>4: Demo 4 (trial)</p> <p>Status: Video loss (401) Time: 2021-03-24 2:12:08.607</p>	<p>5: Demo 1: pid 272 (trial)</p> <p>Status: Audio loss (402) Time: 2021-03-24 2:12:08.406</p>
<p>6: Demo 1: pid 288 (trial)</p> <p>Status: Audio loss (402) Time: 2021-03-24 2:12:08.600</p>	<p>7: Demo 2: pid 272 (trial)</p> <p>Status: Audio loss (402) Time: 2021-03-24 2:12:08.800</p>	<p>8: Demo 2: pid 288 (trial)</p> <p>Status: Audio loss (402) Time: 2021-03-24 2:12:08.975</p>	<p>9: Demo 4: pid 272 (trial)</p> <p>Status: Audio loss (402) Time: 2021-03-24 2:12:09.118</p>	<p>10: Demo 4: pid 288 (trial)</p> <p>Status: Audio loss (402) Time: 2021-03-24 2:12:09.301</p>

(LICENSED) KEY INSTALLATION

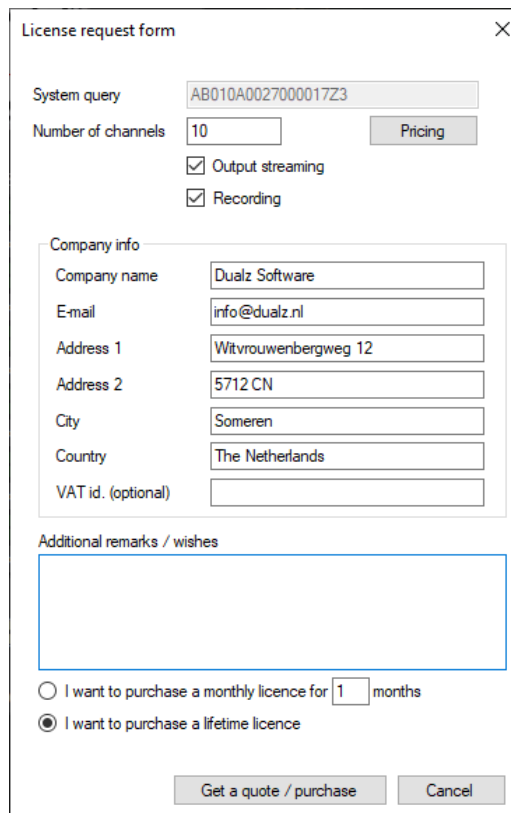
By default, the MOSAIC software will run in demo mode, showing “trial mode” and message boxes. In order to receive a full licensed version, you can query a quote or purchase a perpetual or monthly software license.

Please follow the next steps in order to run the MOSAIC in full feature mode, not showing the demo message boxes.

- If multiviewer screen application is not already running:
 - Run Programs menu – Dualz Software BV – MOSAIC multiviewer (or screen shortcut on desktop).
- Select Help-License-Query new license:



1. Select "Query new license".

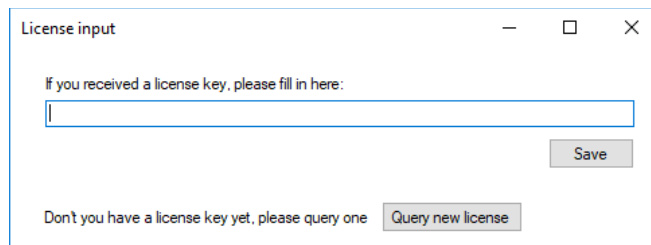


The screenshot shows a "License request form" dialog box. It contains the following fields and options:

- System query: AB010A0027000017Z3
- Number of channels: 10
- Pricing button
- Output streaming
- Recording
- Company info section:
 - Company name: Dualz Software
 - E-mail: info@dualz.nl
 - Address 1: Witvrouwenbergweg 12
 - Address 2: 5712 CN
 - City: Someren
 - Country: The Netherlands
 - VAT id. (optional):
- Additional remarks / wishes: (empty text area)
- License type options:
 - I want to purchase a monthly licence for 1 months
 - I want to purchase a lifetime licence
- Buttons: "Get a quote / purchase" and "Cancel"

2. Fill in the license request form, and press "Get a quote / purchase"
3. If an internet connection is available, the information is sent to Dualz Software.

4. If a connection cannot be made, and you will get a message to manually copy the information into an email, and send that to sales@dualz.nl.
5. If you receive the lifetime (or monthly) license key, Open the MOSAIC license program in Program Menu. The form below appears:

A screenshot of a Windows dialog box titled "License input". It contains a text input field with the prompt "If you received a license key, please fill in here:". Below the input field is a "Save" button. At the bottom of the dialog, there is a link "Don't you have a license key yet, please query one" and a "Query new license" button.

6. Fill in the license, **and restart the MOSAIC screen application.**
7. Check if the software is licensed now:

